

# HAWAI'I CAREER PATHWAY SYSTEM HANDBOOK



ARTS AND COMMUNICATION

BUSINESS

HEALTH SERVICES

INDUSTRIAL AND ENGINEERING TECHNOLOGY

NATURAL RESOURCES

PUBLIC AND HUMAN SERVICES



**CTE**

CAREER AND TECHNICAL EDUCATION

# HAWAI'I CAREER PATHWAY SYSTEM HANDBOOK

## *Express Yourself in* **ARTS AND COMMUNICATION**

Develop an analytical eye for the art and media that infuse the world around you. The Arts and Communication Pathway focuses on connecting formal structures of artistic expression to audience perspectives in careers spanning fashion and technology; digital media; and the visual, performing, and written arts.

## *Lead the Way in the World of* **BUSINESS**

Why answer to the chief executive officer, when you can be one? Business is the foundation for all industries. The diversity of skills and concepts such as technology, finance, customer service, marketing, organizational behavior, and management learned in the Business Pathway applies to careers in all of the pathways.

## *Examine the Scope of* **HEALTH SERVICES**

Make a difference in people's lives through diagnostic and clinical health work, biotechnology medical research, and health and nutrition services. Learn medical terminology, the functions of the body systems, and the treatment and prevention of diseases and disorders in the Health Services Pathway.

## *Build the Future in* **INDUSTRIAL AND ENGINEERING TECHNOLOGY**

Interested in designing, engineering, developing, and building solutions to address society's problems and needs? Solve problems, connect people and places, and make the world run in the diverse career opportunities available in the Industrial and Engineering Technology Pathway.

## *Sustain the World in* **NATURAL RESOURCES**

Feed, clothe, and shelter humankind through occupations that cultivate, use, analyze, manage, and sustain natural resources. The Natural Resources Pathway offers opportunities to make the best use of natural resources in order to meet the basic needs of the world's population.

## *Serve Your Community in* **PUBLIC AND HUMAN SERVICES**

Have a knack for working with people? Enjoy collaboration and teamwork? Consider the broad array of options in the Public and Human Services Pathway with career opportunities in culinary and hotel operations, education, legal and protective services, social sciences, and human services.

# Something For Everyone

## What is the Hawai'i Career Pathway System?

The Hawai'i Career Pathway System is a framework of broad groupings of career specialties/occupations that are called pathways. The specialties/occupations included in each of the Pathways have common skills and knowledge. All occupations are included in the Hawai'i Career Pathway System.

## How many Career Pathways are there?

**The Hawai'i Career Pathway System has six pathways:**

- Arts and Communication
- Business
- Health Services
- Industrial and Engineering Technology
- Natural Resources
- Public and Human Services

## What is the purpose of the Hawai'i Career Pathway System?

The Hawai'i Career Pathway System provides an organizing tool for all educational levels—kindergarten through college—to provide a context for exploring career options and a framework to link learning to the skills and knowledge needed for future success.

## How can the Hawai'i Career Pathway System be used?

One use for the Hawai'i Career Pathway System is as a tool for career awareness and exploration. Identifying various occupations within each of the Career Pathways is a good start to developing career exploration activities.

The six Career Pathways in the Hawai'i Career Pathway System are linked to a short version of an occupational interest inventory included in this Handbook. Taking the interest inventory may help identify career interests and determine which of the six Career Pathways should be pursued.

While career exploration is valuable for all, special needs students such as second language learners or those with disabilities have limited role models and may face stereotyped expectations. Introducing students to broad career pathways and the numerous occupations within each pathway expands possibilities for all students.

# HAWAI'I CAREER PATHWAY SYSTEM

## CAREER AND TECHNICAL EDUCATION

---

### **What is Career and Technical Education?**

Career and Technical Education (CTE) is an educational program that aligns academic standards with technical knowledge and skills to prepare students for careers in current or emerging occupations and further education. CTE is the only educational program in which course content is guided by business and industry input.

### **How are the Hawai'i Career Pathway System and Career and Technical Education linked?**

CTE courses are not required for all occupations but CTE courses can help everyone get a head start on career preparation. The Hawai'i Career Pathway System is the framework for CTE programs of study and provides the structure for career guidance and educational planning, standards development, and assessment.

### **What are Career and Technical Education Programs of Study?**

CTE programs of study, in compliance with federal legislation, offer a sequence of courses to prepare students for the workplace as well as further education. At the high school level, a CTE program of study begins with a Pathway-specific core course followed by a second-year cluster course. Some programs of study also include a third-year concentration course. A specific academic course is also required in all high school CTE programs of study. CTE programs of study at the community college level include all CTE-related degree and/or certificate programs.

### **What is included in a Career and Technical Education Pathway Core Course?**

Each of the six Career Pathways begins with a core course that provides an overview of all occupations within a particular Career Pathway. The CTE pathway core course allows students to explore a variety of occupational opportunities within a particular Pathway while learning work-related skills and knowledge common to all occupations within the Pathway.

### **What is included in a Career and Technical Education Pathway Cluster Course?**

A CTE pathway cluster course is the second-year course in a CTE program of study. The cluster course focuses on more specific occupational requirements for a sub-grouping of occupations within a particular Career Pathway. For example, a student who has completed a Business Pathway Core Course might select a second-year Business Pathway Cluster Course such as Marketing, Management, or Accounting.

### **What is included in a Career and Technical Education Pathway Concentration Course?**

A CTE pathway concentration course is the third-year course in a CTE program of study. The concentration course focuses on more specific occupational requirements requiring advanced skills and knowledge for a sub-grouping of occupations within the cluster. For example, a student who has completed the Business Pathway Core Course and the Business Pathway Management Cluster Course might select a third-year Concentration course such as Human Resource Management or Travel Industry Management.

---

## **How is Career and Technical Education Program of Study course content determined?**

Pathway Advisory Councils composed of business and industry representatives from across the State guide each of the six Career Pathways. The skills and knowledge content for all CTE program of study courses is based on standards that have been validated by statewide Pathway Advisory Councils.

## **How is student mastery of Career and Technical Education Program of Study course content assessed?**

CTE students take statewide on-line assessments to determine their mastery of CTE course content. The statewide assessment assures that all students, regardless of the high school they attend, have mastered the same course content standards.

## **How are students assessed for performance-based mastery of Career and Technical Education Program of Study course content?**

A special performance-based assessment (PBA) event is conducted to determine student proficiency in applying the skills and knowledge learned in CTE programs of study. A PBA requires that students develop a solution/product/strategy to resolve a need or problem specified by a business or industry. Within a 24-hour period of time, students must analyze the need or problem, develop a response, and prepare a presentation defending their response. Students present and defend their responses to panels of business and industry representatives who judge the appropriateness of the solution/product/strategy and determine performance-based mastery of CTE program of study course content.

## **Can Career and Technical Education students earn college credits while in high school?**

Articulation agreements between the Hawai'i Department of Education (HIDOE) and two- and four-year colleges and universities have been formalized for some CTE programs of study. These agreements grant college credit free of charge to high school students who have successfully completed a CTE program of study and all requisites included in the agreement. The formal CTE agreements between the HIDOE and the University of Hawai'i Community Colleges System are known as Dual Credit Articulated Programs of Study (DCAPS).

## **Are Career and Technical Education students eligible for Honors Recognition Certificates?**

Students who meet the requirements of a Hawai'i High School Diploma with a cumulative GPA of 3.0 or above, complete a CTE program of study, and meet all specified requirements are eligible for Honors Recognition Certificates.



# ARTS AND COMMUNICATION CAREER PATHWAY

## OCCUPATIONAL EXAMPLES

*Interested in these occupations?*

| OCCUPATIONAL CLUSTER                 | OCCUPATIONAL EXAMPLES  |   |   |
|--------------------------------------|--|---|---|
| <b>FASHION ARTS AND TECHNOLOGIES</b> | <ul style="list-style-type: none"> <li>• Costume Designer</li> <li>• Fashion Designer</li> </ul>   | <ul style="list-style-type: none"> <li>• Fashion Illustrator</li> <li>• Pattern Maker</li> </ul>  | <ul style="list-style-type: none"> <li>• Stylist</li> <li>• Textile Designer</li> </ul>   |
| <b>MEDIA ARTS AND TECHNOLOGIES</b>   | <ul style="list-style-type: none"> <li>• 3D Artist</li> <li>• Animator</li> <li>• Art Director</li> <li>• Concept Artist</li> <li>• Game Designer</li> <li>• Graphic Artist</li> </ul>                               | <ul style="list-style-type: none"> <li>• Grip Technician</li> <li>• Interface Designer</li> <li>• Layout Artist</li> <li>• Photographer</li> <li>• Publisher</li> <li>• Radio Broadcaster</li> </ul>    | <ul style="list-style-type: none"> <li>• Sound Designer</li> <li>• Sound Engineer</li> <li>• Technical Assistant</li> <li>• Videographer</li> <li>• Visual Effect Artist</li> </ul> |
| <b>PERFORMING ARTS</b>               | <ul style="list-style-type: none"> <li>• Actor</li> <li>• Dancer</li> <li>• Choreographer</li> <li>• Composer</li> </ul>   | <ul style="list-style-type: none"> <li>• Conductor</li> <li>• Director</li> <li>• Lighting Designer</li> <li>• Music Arranger</li> </ul>  | <ul style="list-style-type: none"> <li>• Producer</li> <li>• Set Construction Worker</li> <li>• Set Designer</li> </ul>   |
| <b>VISUAL ARTS</b>                   | <ul style="list-style-type: none"> <li>• Appraiser</li> <li>• Art Critic</li> <li>• Art Maintenance Specialist</li> <li>• Art Preservation Administrator</li> <li>• Art Restorer</li> <li>• Arts Educator</li> </ul> | <ul style="list-style-type: none"> <li>• Arts Organizer</li> <li>• Docent Guide</li> <li>• Exhibit Constructor</li> <li>• Exhibit Curator</li> <li>• Framer</li> <li>• Gallery Administrator</li> </ul> | <ul style="list-style-type: none"> <li>• Museum Director/Curator</li> <li>• Museum Educator</li> <li>• Research Director</li> <li>• Researcher</li> <li>• Slide Maker</li> </ul>    |
| <b>WRITTEN ARTS</b>                  | <ul style="list-style-type: none"> <li>• Copywriter</li> <li>• Editor</li> <li>• Journalist</li> </ul>   | <ul style="list-style-type: none"> <li>• Novelist</li> <li>• Proofreader</li> <li>• Publisher</li> </ul>  | <ul style="list-style-type: none"> <li>• Reporter</li> <li>• Screenwriter</li> <li>• Script Writer</li> </ul>   |

*Start your career pathway in these programs of study*



# ARTS AND COMMUNICATION CAREER PATHWAY

## CAREER AND TECHNICAL EDUCATION ARTS AND COMMUNICATION PATHWAY

### PROGRAMS OF STUDY

| OCCUPATIONAL CLUSTER               | PROGRAM OF STUDY       | PROGRAM OF STUDY CORE COURSE | PROGRAM OF STUDY CLUSTER COURSE           | PROGRAM OF STUDY CONCENTRATION COURSE | PROGRAM OF STUDY REQUIRED ACADEMIC COURSE |
|------------------------------------|------------------------|------------------------------|---|---------------------------------------|---|
| <b>FASHION ARTS AND TECHNOLOGY</b> | FASHION DESIGN         | Arts and Communication       | Fashion Design                            |                                       | Geometry or Equivalency                   |
| <b>MEDIA ARTS AND TECHNOLOGIES</b> | ANIMATION              | Arts and Communication       | Digital Media Technology                  | Animation                             | Expository Writing or Equivalent          |
|                                    | BROADCAST MEDIA        | Arts and Communication       | Digital Media Technology                  | Broadcast Media                       |   |
|                                    | DIGITAL MEDIA          | Arts and Communication       | Digital Media Technology                  |                                       |   |
|                                    | GAME DESIGN            | Arts and Communication       | Digital Media Technology                  | Gaming                                |   |
|                                    | GRAPHIC DESIGN I       | Arts and Communication       | Graphic Design Technology I               |                                       |   |
|                                    | GRAPHIC DESIGN II      | Arts and Communication       | Graphic Design Technology I               | Graphic Design Technology II          |   |
| WEB DESIGN                         | Arts and Communication | Digital Media Technology     | Web Design                                |                                       |   |
| <b>ENTREPRENEURSHIP</b>            | ENTREPRENEURSHIP       | Arts and Communication       | Any Arts and Communication Cluster Course | Entrepreneurship                      | Cluster Required Academic Course          |



# BUSINESS CAREER PATHWAY

## OCCUPATIONAL EXAMPLES

*Interested in these occupations?*

| OCCUPATIONAL CLUSTER                    | OCCUPATIONAL EXAMPLES   |  |  |
|---|---|--|--|
| <b>ACCOUNTING</b>                       | <ul style="list-style-type: none"> <li>Account Clerk</li> <li>Accountant</li> <li>Auditor</li> <li>Bill and Account Collector</li> <li>Bookkeeper</li> </ul>  | <ul style="list-style-type: none"> <li>Corporate Accountant</li> <li>Cost Estimator</li> <li>Electronic Tax Filer</li> <li>Financial Analyst</li> <li>Financial Clerk</li> </ul>   | <ul style="list-style-type: none"> <li>Financial Manager</li> <li>Forensic Accountant</li> <li>Revenue Agent</li> <li>Tax Accountant</li> <li>Tax Examiner and Collector</li> </ul>  |
| <b>BUSINESS LAW</b>                     | <ul style="list-style-type: none"> <li>Arbitrator</li> <li>Lawyer</li> </ul>  | <ul style="list-style-type: none"> <li>Legal Assistant</li> <li>Mediator/Conciliator</li> </ul>  | <ul style="list-style-type: none"> <li>Paralegal</li> </ul>  |
| <b>FINANCE</b>                          | <ul style="list-style-type: none"> <li>Actuary</li> <li>Bank Manager</li> <li>Chief Financial Officer</li> <li>Claims Adjustor</li> <li>Economist</li> </ul>  | <ul style="list-style-type: none"> <li>Financial Advisor/Planner</li> <li>Investment Analyst</li> <li>Loan Officer</li> <li>Mortgage Broker</li> <li>Real Estate Broker</li> </ul>   | <ul style="list-style-type: none"> <li>Sales Agent</li> <li>Securities, Commodities, and Financial Services Agent</li> <li>Teller</li> <li>Underwriter</li> </ul>  |
| <b>MANAGEMENT</b>                       | <ul style="list-style-type: none"> <li>Administrative Services Manager</li> <li>Compensation and Benefits Manager/Analyst</li> <li>Executive</li> <li>Food Service Manager</li> <li>General Manager</li> <li>Hotel and Lodging Manager</li> </ul> | <ul style="list-style-type: none"> <li>Human Relations Clerk</li> <li>Human Resources Manager/Specialist</li> <li>Logistician</li> <li>Management Analyst</li> <li>Meeting, Convention, and Event Planner</li> </ul>                             | <ul style="list-style-type: none"> <li>Operations Manager</li> <li>Personnel Director</li> <li>Purchasing Manager</li> <li>Sales Manager</li> <li>Training and Development Manager/Specialist</li> <li>Travel Agent</li> </ul>           |
| <b>MANAGEMENT INFORMATION SYSTEMS</b>   | <ul style="list-style-type: none"> <li>Application Developer</li> <li>Chief Technology Officer</li> <li>Computer and Information Systems Manager</li> <li>Computer Hardware Engineer</li> <li>Computer Programmer</li> </ul>                      | <ul style="list-style-type: none"> <li>Computer Support Specialist</li> <li>Computer Systems Analyst</li> <li>Database Administrator</li> <li>Hardware Administrator</li> <li>Information Security Analyst</li> <li>Network Architect</li> </ul> | <ul style="list-style-type: none"> <li>Network Technician</li> <li>Networks and Computer Systems Administrator</li> <li>Software Engineer</li> <li>System Administrator</li> <li>Web Developer</li> </ul>                                |
| <b>MARKETING</b>                        | <ul style="list-style-type: none"> <li>Account Executive</li> <li>Buyer</li> <li>Cashier</li> <li>Customer Service Representative</li> <li>Data Analyst/Statistician</li> <li>Distribution Manager</li> </ul>                                     | <ul style="list-style-type: none"> <li>Insurance Sales Agent</li> <li>International Marketing Specialist</li> <li>Inventory Clerk</li> <li>Layout Specialist</li> <li>Product Developer</li> <li>Public Relations Manager</li> </ul>             | <ul style="list-style-type: none"> <li>Public Relations Specialist</li> <li>Sales Associate</li> <li>Store Manager</li> <li>Survey Researcher</li> <li>Telemarketer</li> <li>Wholesale and Manufacturing Sales Representative</li> </ul> |
| <b>OFFICE ADMINISTRATION TECHNOLOGY</b> | <ul style="list-style-type: none"> <li>Administrative Assistant</li> <li>Chief Information Officer</li> </ul>   | <ul style="list-style-type: none"> <li>Data Base Manager</li> <li>Data Entry Clerk</li> </ul>  | <ul style="list-style-type: none"> <li>Office Manager</li> <li>Records Technician/File Clerk</li> </ul>  |
| <b>RETAILING</b>                        | <ul style="list-style-type: none"> <li>Buyer</li> <li>Cashier</li> </ul>  | <ul style="list-style-type: none"> <li>Purchasing Agent</li> </ul>   | <ul style="list-style-type: none"> <li>Retail Salesperson</li> </ul>   |
| <b>ENTREPRENEURSHIP</b>                 | <ul style="list-style-type: none"> <li>Business Consultant</li> </ul>   | <ul style="list-style-type: none"> <li>Entrepreneur</li> </ul>   |  |

*Start your career pathway in these programs of study*



# BUSINESS CAREER PATHWAY

## CAREER AND TECHNICAL EDUCATION BUSINESS PATHWAY

### PROGRAMS OF STUDY

| OCCUPATIONAL CLUSTER                    | PROGRAM OF STUDY               | PROGRAM OF STUDY CORE COURSE                   | PROGRAM OF STUDY CLUSTER COURSE                       | PROGRAM OF STUDY CONCENTRATION COURSE | PROGRAM OF STUDY REQUIRED ACADEMIC COURSE |
|---|--------------------------------|--|---|---------------------------------------|---|
| <b>ACCOUNTING</b>                       | ACCOUNTING I                   | Business                                       | Accounting I  |                                       | Economics or Equivalent                   |
|   | ACCOUNTING II                  | Business                                       | Accounting I  | Accounting II                         |   |
| <b>BUSINESS LAW</b>                     | BUSINESS LAW                   | Business                                       | Business Law  |                                       |   |
| <b>FINANCE</b>                          | FINANCE                        | Business                                       | Finance   |                                       |   |
| <b>MANAGEMENT</b>                       | HUMAN RESOURCES MANAGEMENT     | Business                                       | Management  | Human Resources Management            |   |
|   | MANAGEMENT                     | Business                                       | Management  |                                       |   |
|   | TRAVEL MANAGEMENT              | Business                                       | Management  | Travel Industry Management            |   |
| <b>MANAGEMENT INFORMATION SYSTEMS</b>   | MANAGEMENT INFORMATION SYSTEMS | Business                                       | Management Information Systems                        |                                       |   |
|   | ORACLE CERTIFICATION           | Fundamentals of Database Control and Functions | Special Programming Special Database and Applications |                                       |   |
| <b>MARKETING</b>                        | MARKETING                      | Business                                       | Marketing   |                                       |   |
| <b>OFFICE ADMINISTRATION TECHNOLOGY</b> | OFFICE ADMINISTRATION          | Business                                       | Office Administration                                 |                                       |   |
| <b>RETAILING</b>                        | RETAILING                      | Business                                       | Retail  |                                       |   |
| <b>ENTREPRENEURSHIP</b>                 | ENTREPRENEURSHIP               | Business                                       | Any Business CTE Program of Study Cluster Course      | Entrepreneurship                      |   |



# HEALTH SERVICES CAREER PATHWAY

## OCCUPATIONAL EXAMPLES

*Interested in these occupations?*

| OCCUPATIONAL CLUSTER         | OCCUPATIONAL EXAMPLES   |   |   |
|------------------------------|---|---|---|
| <b>CLINICAL</b>              | <ul style="list-style-type: none"> <li>• Audiologist</li> <li>• Chiropractor</li> <li>• Dental Assistant</li> <li>• Dentist</li> <li>• Emergency Medical Technician</li> <li>• Home Care Aide</li> <li>• Language Pathologist</li> <li>• Licensed Practical Nurse</li> <li>• Massage Therapist</li> </ul> | <ul style="list-style-type: none"> <li>• Medical Assistant</li> <li>• Medical Doctor</li> <li>• Naturopath</li> <li>• Nurse's Aide</li> <li>• Occupational Therapist</li> <li>• Pharmacist</li> <li>• Pharmacy Technician</li> <li>• Physical Therapist Aide</li> </ul> | <ul style="list-style-type: none"> <li>• Physician Assistant</li> <li>• Psychiatrist</li> <li>• Psychologist</li> <li>• Registered Nurse (ADN)</li> <li>• Registered Nurse (BSN)</li> <li>• Respiratory Assistant</li> <li>• Respiratory Therapist</li> <li>• Speech Pathologist</li> </ul> |
| <b>DIAGNOSTIC</b>            | <ul style="list-style-type: none"> <li>• Diagnostic Imaging Assistant</li> <li>• Diagnostic Medical Sonographer</li> <li>• EEG Technician</li> </ul>  | <ul style="list-style-type: none"> <li>• Medical Laboratory Technician</li> <li>• Medical Technologist</li> <li>• Pathologist</li> </ul>  | <ul style="list-style-type: none"> <li>• Phlebotomist Laboratory Assistant</li> <li>• Radiological Technologist</li> <li>• Radiologist</li> </ul>   |
| <b>HEALTH AND NUTRITION</b>  | <ul style="list-style-type: none"> <li>• Dietetic Technician</li> <li>• Dietitian Aide</li> </ul>   | <ul style="list-style-type: none"> <li>• Nutritionist</li> <li>• Registered Dietitian</li> </ul>  | <ul style="list-style-type: none"> <li>• Sports Nutritionist</li> </ul>   |
| <b>MEDICAL BIOTECHNOLOGY</b> | <ul style="list-style-type: none"> <li>• Biochemist</li> <li>• Biomedical Chemist</li> <li>• Biostatistician</li> <li>• Forensic Scientist</li> <li>• Geneticist</li> </ul>   | <ul style="list-style-type: none"> <li>• Lab Assistant-Genetics</li> <li>• Microbiologist</li> <li>• Molecular Biologist</li> <li>• Quality Assurance Technician</li> </ul>   | <ul style="list-style-type: none"> <li>• Quality Control Technician</li> <li>• Research Assistant</li> <li>• Scientist</li> <li>• Toxicologist</li> </ul>   |
| <b>SUPPORT SERVICES</b>      | <ul style="list-style-type: none"> <li>• Biomedical Engineer</li> <li>• Biomedical Technician</li> <li>• Central Services Director</li> <li>• Central Services Technician</li> </ul>  | <ul style="list-style-type: none"> <li>• Environmental Health and Safety Officer</li> <li>• Hospital Maintenance Engineer</li> <li>• Industrial Hygienist</li> </ul>  | <ul style="list-style-type: none"> <li>• Materials Coordinator</li> <li>• Transport Services Coordinator</li> <li>• Transporter</li> </ul>  |

*Start your career pathway in these programs of study*



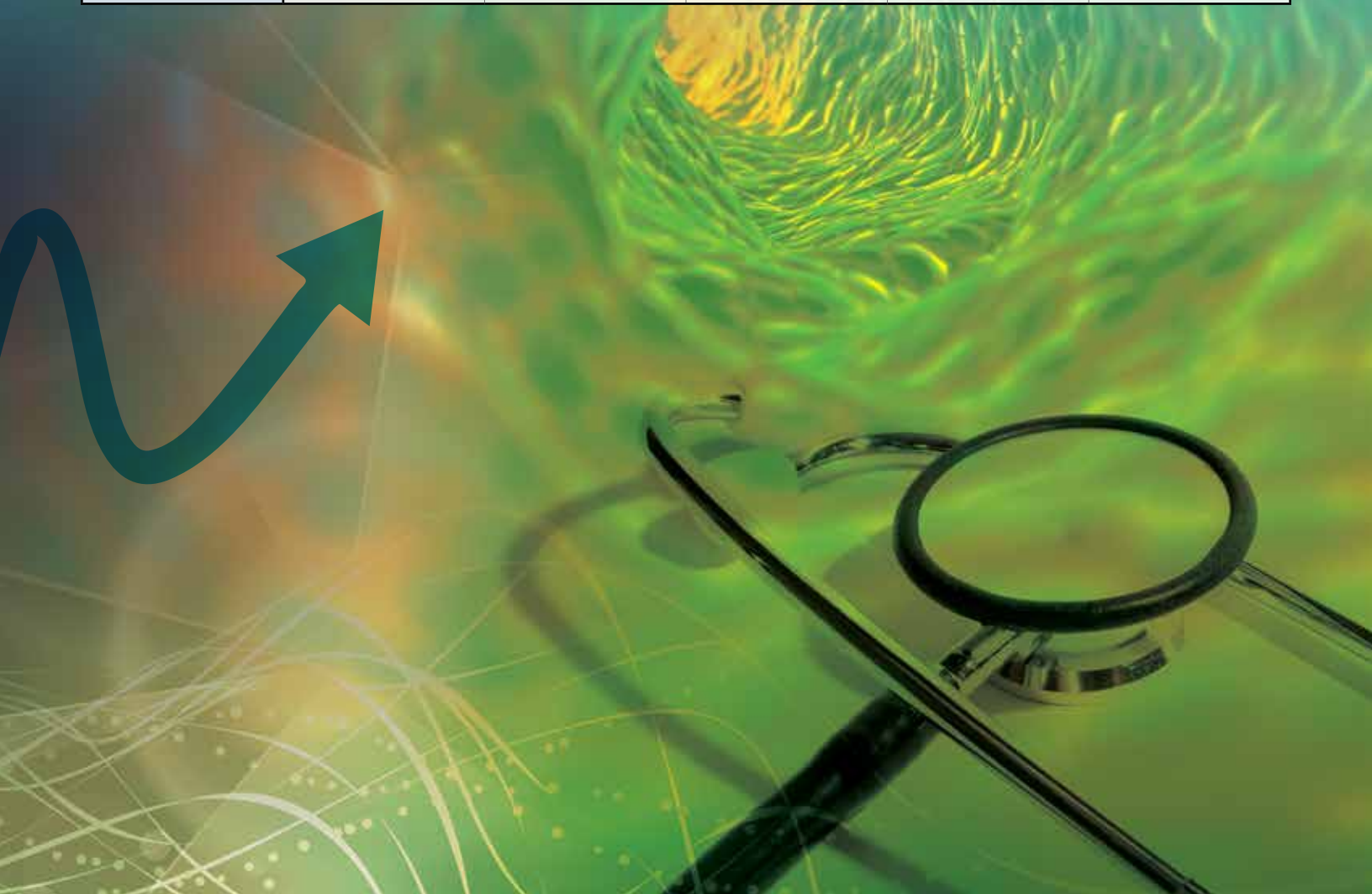


# HEALTH SERVICES CAREER PATHWAY

## CAREER AND TECHNICAL EDUCATION HEALTH SERVICES PATHWAY

### PROGRAMS OF STUDY

| OCCUPATIONAL CLUSTER         | PROGRAM OF STUDY           | PROGRAM OF STUDY CORE COURSE | PROGRAM OF STUDY CLUSTER COURSE                     | PROGRAM OF STUDY CONCENTRATION COURSE | PROGRAM OF STUDY REQUIRED ACADEMIC COURSE |
|------------------------------|----------------------------|------------------------------|---|---------------------------------------|---|
| <b>CLINICAL HEALTH</b>       | CLINICAL HEALTH            | Health Services              | Clinical Health                                     |                                       | Biology or Equivalent                     |
|                              | EMERGENCY MEDICAL SERVICES | Health Services              | Clinical Health                                     | Emergency Medical Services            |   |
|                              | HEALTH INFORMATICS         | Health Services              | Clinical Health                                     | Health Informatics                    |   |
|                              | NURSE'S AIDE TRAINING      | Health Services              | Clinical Health                                     | Nurse's Aide Training                 |   |
| <b>HEALTH AND NUTRITION</b>  | NUTRITION                  | Health Services              | Health and Nutrition                                |                                       |   |
| <b>MEDICAL BIOTECHNOLOGY</b> | MEDICAL BIOTECHNOLOGY      | Health Services              | Medical Biotechnology                               |                                       |   |
| <b>ENTREPRENEURSHIP</b>      | ENTREPRENEURSHIP           | Health Services              | Any Health Services Program of Study Cluster Course | Entrepreneurship                      |   |



# INDUSTRIAL AND ENGINEERING TECHNOLOGY CAREER PATHWAY

## OCCUPATIONAL EXAMPLES

*Interested in  
these occupations?*

| OCCUPATIONAL CLUSTER                   | OCCUPATIONAL EXAMPLES  |  |  |
|--|--|--|--|
| <b>BUILDING AND CONSTRUCTION</b>       | <ul style="list-style-type: none"> <li>• Brickmason</li> <li>• Building Inspector</li> <li>• Carpenter</li> <li>• Crane Operator</li> </ul>                                  | <ul style="list-style-type: none"> <li>• Electrician</li> <li>• Elevator Technician</li> <li>• Glazier</li> <li>• Plaster and Stucco Mason</li> </ul>                    | <ul style="list-style-type: none"> <li>• Plumber</li> <li>• Roofer</li> <li>• Stonemason</li> <li>• Tile and Marble Setter</li> </ul>                                      |
| <b>DESIGN AND ENGINEERING</b>          | <ul style="list-style-type: none"> <li>• Architect</li> <li>• Biofuel Engineer</li> <li>• Civil Engineer</li> <li>• Drafter</li> </ul>                                       | <ul style="list-style-type: none"> <li>• Fuel Cell Technician</li> <li>• Materials Engineer</li> <li>• Mechanical Engineer</li> </ul>                                    | <ul style="list-style-type: none"> <li>• Mechatronic Technician</li> <li>• Nanotechnology Engineer</li> <li>• Surveyor</li> </ul>  |
| <b>ELECTRONIC AND COMPUTER SYSTEMS</b> | <ul style="list-style-type: none"> <li>• Cable Technician</li> <li>• Computer Engineer</li> <li>• Electronic Inspector</li> </ul>  | <ul style="list-style-type: none"> <li>• Microsystems Technician</li> <li>• Nanosystem Technician</li> </ul>   | <ul style="list-style-type: none"> <li>• Software Engineer</li> <li>• Systems Engineer</li> </ul>  |
| <b>ELECTRONIC TECHNOLOGY</b>           | <ul style="list-style-type: none"> <li>• Communications Systems Engineer</li> <li>• Electrical and Electronic Drafter</li> <li>• Electrical Engineer</li> </ul>              | <ul style="list-style-type: none"> <li>• Electrical Installation Technician</li> <li>• Electrical Systems Planner</li> <li>• Electro-Mechanical Technician</li> </ul>    | <ul style="list-style-type: none"> <li>• Electronic Engineer or Technician</li> <li>• Energy Engineer</li> </ul>   |
| <b>MANUFACTURING</b>                   | <ul style="list-style-type: none"> <li>• Automotive Body Worker</li> <li>• Brazer</li> <li>• Fabricator Mechanic</li> <li>• Industrial Engineer or Technician</li> </ul>     | <ul style="list-style-type: none"> <li>• Machinist Mechanic</li> <li>• Mechanical Engineer</li> <li>• Nuclear Power Technician</li> <li>• Photonic Technician</li> </ul> | <ul style="list-style-type: none"> <li>• Production Engineer</li> <li>• Robotic Technician</li> <li>• Semiconductor Processor</li> <li>• Sheet Metal Technician</li> </ul> |
| <b>TRANSPORTATION SYSTEMS</b>          | <ul style="list-style-type: none"> <li>• Aircraft Mechanic</li> <li>• Atmospheric Scientist</li> <li>• Automotive Technician</li> <li>• Aviation Safety Inspector</li> </ul> | <ul style="list-style-type: none"> <li>• Avionic Systems Technician</li> <li>• Heavy Equipment Mechanic</li> <li>• Marine Technician</li> </ul>                          | <ul style="list-style-type: none"> <li>• Motorcycle Service Technician</li> <li>• Traffic Safety Inspector</li> <li>• Transportation Planner</li> </ul>                    |

*Start your career pathway  
in these programs of study*



# INDUSTRIAL AND ENGINEERING TECHNOLOGY CAREER PATHWAY

CAREER AND TECHNICAL EDUCATION HEALTH SERVICES PATHWAY

## PROGRAMS OF STUDY

| OCCUPATIONAL CLUSTER            | PROGRAM OF STUDY                          | PROGRAM OF STUDY CORE COURSE                              | PROGRAM OF STUDY CLUSTER COURSE                                | PROGRAM OF STUDY CONCENTRATION COURSE | PROGRAM OF STUDY REQUIRED ACADEMIC COURSE |
|---------------------------------|---|---|--|---------------------------------------|---|
| BUILDING AND CONSTRUCTION       | BUILDING AND CONSTRUCTION I               | Industrial and Engineering Technology                     | Building and Construction I                                    |                                       | Geometry or Equivalent                    |
|                                 | BUILDING AND CONSTRUCTION II              | Industrial and Engineering Technology                     | Building and Construction I                                    | Building and Construction II          |   |
|                                 | ELECTRICAL INSTALLATION                   | Industrial and Engineering Technology                     | Electricity and Electronics                                    |                                       |   |
| DESIGN AND ENGINEERING          | DESIGN TECHNOLOGY I                       | Industrial and Engineering Technology                     | Design Tech I  |                                       | Algebra I or Equivalent                   |
|                                 | DESIGN TECHNOLOGY II                      | Industrial and Engineering Technology                     | Design Tech I  | Design Tech II                        |   |
|                                 | ENGINEERING TECHNOLOGY I                  | Industrial and Engineering Technology                     | Engineering Technology I                                       |                                       | Algebra II or Equivalent                  |
|                                 | ENGINEERING TECHNOLOGY II                 | Industrial and Engineering Technology                     | Engineering Technology I                                       | Engineering Technology II             |   |
| ELECTRONIC AND COMPUTER SYSTEMS | COMPUTER NETWORKING                       | Industrial and Engineering Technology                     | Networking Fundamentals and LAN                                |                                       | Algebra I or Equivalent                   |
|                                 | CYBERSECURITY                             | Industrial and Engineering Technology                     | Networking Fundamentals and LAN                                | Cybersecurity                         |   |
|                                 | A+ CERTIFICATION                          | A+ Certification Intro/A+ Certifications Computer Systems | A+ Certification Operating Systems/ Internship                 |                                       |   |
|                                 | CISCO CERTIFICATION                       | Networking Fundamentals and LAN                           | WAN and Networking Architecture                                |                                       |   |
|                                 | COMPUTER TECHNICIAN                       | Industrial and Engineering Technology                     | Computer Electronics   |                                       |   |
| ELECTRONIC TECHNOLOGY           | ELECTRONICS AND ELECTRICAL ENGINEERING I  | Industrial and Engineering Technology                     | Electronic Technology I  |                                       |   |
|                                 | ELECTRONICS AND ELECTRICAL ENGINEERING II | Industrial and Engineering Technology                     | Electronic Technology I  | Electronic Technology II              |   |
| MANUFACTURING                   | AUTOBODY REPAIR AND REBURBISHING          | Industrial and Engineering Technology                     | Autobody Repair and Refinishing I                              |                                       | Physical Science or Equivalent            |
|                                 | ADVANCED AUTOBODY REPAIR AND REBURBISHING | Industrial and Engineering Technology                     | Autobody Repair and Refinishing I                              | Autobody Repair and Refinishing II    |   |
|                                 | METAL WORKING TECHNOLOGY I                | Industrial and Engineering Technology                     | Metals Technology I  |                                       |   |
|                                 | METAL WORKING TECHNOLOGY II               | Industrial and Engineering Technology                     | Metals Technology I  | Metals Technology II                  |   |
| TRANSPORTATION SYSTEMS          | AUTOMOTIVE TECHNOLOGY I                   | Industrial and Engineering Technology                     | Automotive Technology I  |                                       |   |
|                                 | AUTOMOTIVE TECHNOLOGY II                  | Industrial and Engineering Technology                     | Automotive Technology I  | Automotive Technology II              |   |
| ENTREPRENEURSHIP                | ENTREPRENEURSHIP                          | Industrial and Engineering Technology                     | Any Industrial and Engineering Program of Study Cluster Course | Entrepreneurship                      | Cluster Required Academic Course          |

# NATURAL RESOURCES CAREER PATHWAY

## OCCUPATIONAL EXAMPLES

*Interested in these occupations?*

| OCCUPATIONAL CLUSTER                           | OCCUPATIONAL EXAMPLES  |   |   |
|--|--|---|---|
| <b>AGRICULTURE/<br/>AQUACULTURE PRODUCTION</b> | <ul style="list-style-type: none"> <li>• Ag-Aqua Engineer</li> <li>• Agricultural Extension Agent</li> <li>• Agricultural Inspector</li> <li>• Agricultural Manager</li> <li>• Agricultural Science Teacher</li> <li>• Agricultural Technician</li> </ul>  | <ul style="list-style-type: none"> <li>• Agriculture and Food Science Technician</li> <li>• Agronomist</li> <li>• Aquacultural Manager</li> <li>• Farm Equipment Technician</li> </ul>  | <ul style="list-style-type: none"> <li>• Farm Labor Contractor</li> <li>• Field Manager</li> <li>• Irrigation Engineer Technician</li> <li>• Marine Biologist</li> <li>• Soil Scientist</li> </ul>  |
| <b>ANIMAL SYSTEMS</b>                          | <ul style="list-style-type: none"> <li>• Animal Science Teacher</li> <li>• Animal Scientist</li> <li>• Beekeeper</li> </ul>  | <ul style="list-style-type: none"> <li>• Farm Manager</li> <li>• Livestock Extension Agent</li> <li>• Range Manager</li> </ul>  | <ul style="list-style-type: none"> <li>• Veterinarian</li> <li>• Veterinary Assistant</li> </ul>  |
| <b>ENVIRONMENTAL RESOURCE<br/>MANAGEMENT</b>   | <ul style="list-style-type: none"> <li>• Biofuel Processing Technician</li> <li>• Biomass Engineer</li> <li>• Bio-Resource Manager</li> <li>• Cartographer</li> <li>• Conservation Scientist</li> <li>• Environmental Compliance Inspector</li> <li>• Environmental Engineer</li> <li>• Environmental Resource Technician</li> </ul> | <ul style="list-style-type: none"> <li>• Environmental Science Teacher</li> <li>• Environmental Scientist</li> <li>• Fish and Game Warden</li> <li>• Forest and Conservation Technician</li> <li>• Forester</li> <li>• Forestry Manager</li> <li>• Geologist</li> <li>• Geophysical Technician</li> </ul> | <ul style="list-style-type: none"> <li>• Hydroelectric Plant Technician</li> <li>• Hydrologist</li> <li>• Hydrology Technician</li> <li>• Marine Biologist</li> <li>• Park Naturalist</li> <li>• Soil and Water Conservationist</li> <li>• Wildlife Biologist</li> <li>• Zoologist</li> </ul> |
| <b>HORTICULTURE</b>                            | <ul style="list-style-type: none"> <li>• Arboriculturist</li> <li>• Architectural Landscaper</li> <li>• Botanist</li> <li>• Entomologist</li> </ul>  | <ul style="list-style-type: none"> <li>• Ethnobotanist</li> <li>• Field Technician</li> <li>• Floral Designer</li> <li>• Floriculturist</li> </ul>  | <ul style="list-style-type: none"> <li>• Greenhouse Technician</li> <li>• Grounds Manager</li> <li>• Nursery Technician</li> <li>• Soil and Plant Scientist</li> </ul>  |
| <b>NATURAL RESOURCES<br/>BIOTECHNOLOGY</b>     | <ul style="list-style-type: none"> <li>• Biochemist</li> <li>• Biophysicist</li> </ul>   | <ul style="list-style-type: none"> <li>• Biotechnology Technician</li> <li>• Field Manager</li> </ul>   | <ul style="list-style-type: none"> <li>• Genetic Engineer</li> <li>• Geneticist</li> </ul>  |

*Start your career pathway in these programs of study*





# NATURAL RESOURCES CAREER PATHWAY

## CAREER AND TECHNICAL EDUCATION NATURAL RESOURCES PATHWAY

### PROGRAMS OF STUDY

| OCCUPATIONAL CLUSTER                               | PROGRAM OF STUDY                        | PROGRAM OF STUDY CORE COURSE | PROGRAM OF STUDY CLUSTER COURSE                       | PROGRAM OF STUDY CONCENTRATION COURSE | PROGRAM OF STUDY REQUIRED ACADEMIC COURSE |
|--|---|------------------------------|---|---------------------------------------|---|
| <b>AGRICULTURE/<br/>AQUACULTURE<br/>PRODUCTION</b> | NATURAL RESOURCE BUSINESS DEVELOPMENT   | Natural Resources            | Natural Resources Production I                        | Natural Resources Management          | Economics or Equivalent                   |
|  | NATURAL RESOURCES PRODUCTION I          | Natural Resources            | Natural Resources Production I                        |                                       |   |
|  | NATURAL RESOURCES PRODUCTION II         | Natural Resources            | Natural Resources Production I                        | Natural Resources Production II       |   |
| <b>ANIMAL SYSTEMS</b>                              | ANIMAL SYSTEMS I                        | Natural Resources            | Animal Systems I                                      |                                       |   |
|  | ANIMAL SYSTEMS II                       | Natural Resources            | Animal Systems I                                      | Animal Systems II                     |   |
| <b>ENVIRONMENTAL<br/>RESOURCE<br/>MANAGEMENT</b>   | ENVIRONMENTAL AND CONSERVATION SCIENCES | Natural Resources            | Environmental Resource Management                     | Conservation                          |   |
|  | ENVIRONMENTAL RESOURCE MANAGEMENT       | Natural Resources            | Environmental Resource Management                     |                                       |   |
|  | FISHERIES                               | Natural Resources            | Environmental Resource Management                     | Fisheries                             | Biology or Equivalent                     |
|  | FORESTRY                                | Natural Resources            | Environmental Resource Management                     | Forestry                              |   |
| <b>HORTICULTURE</b>                                | PLANT DESIGN AND MANAGEMENT             | Natural Resources            | Plant Systems I                                       | Plant Systems II                      |   |
|  | PLANT SYSTEMS I                         | Natural Resources            | Plant Systems I                                       |                                       |   |
| <b>NATURAL<br/>RESOURCES<br/>BIOTECHNOLOGY</b>     | NATURAL RESOURCES BIOTECHNOLOGY I       | Natural Resources            | Natural Resources Biotechnology I                     |                                       |   |
|  | NATURAL RESOURCES BIOTECHNOLOGY II      | Natural Resources            | Natural Resources Biotechnology I                     | Natural Resources Biotechnology II    |   |
| <b>ENTREPRENEURSHIP</b>                            | ENTREPRENEURSHIP                        | Natural Resources            | Any Natural Resources Program of Study Cluster Course | Entrepreneurship                      | Cluster Required Academic Course          |

# PUBLIC AND HUMAN SERVICES CAREER PATHWAY

## OCCUPATIONAL EXAMPLES

*Interested in these occupations?*

| OCCUPATIONAL CLUSTER                 | OCCUPATIONAL EXAMPLES   |   |  |
|--------------------------------------|---|---|--|
| <b>EDUCATION</b>                     | <ul style="list-style-type: none"> <li>• Administrative Assistant</li> <li>• Career Guidance Technician</li> <li>• Counselor</li> <li>• Counselor's Aide</li> <li>• Curriculum Aide</li> </ul>  | <ul style="list-style-type: none"> <li>• Education Specialist</li> <li>• Educational Assistant</li> <li>• Librarian</li> <li>• Preschool Director</li> <li>• Preschool Teacher</li> </ul>   | <ul style="list-style-type: none"> <li>• Principal</li> <li>• Speech Therapist</li> <li>• Teacher</li> <li>• Teacher's Aide</li> </ul>   |
| <b>HUMAN SERVICES</b>                | <ul style="list-style-type: none"> <li>• Community Aide</li> <li>• Pastor</li> <li>• Pastoral Assistant</li> </ul>  | <ul style="list-style-type: none"> <li>• Psychologist</li> <li>• Research Assistant</li> </ul>  | <ul style="list-style-type: none"> <li>• Social Service Assistant</li> <li>• Youth Worker</li> </ul>   |
| <b>LEGAL AND PROTECTIVE SERVICES</b> | <ul style="list-style-type: none"> <li>• Bailiff</li> <li>• Caseworker</li> <li>• Corrections Guard</li> <li>• Corrections Officer</li> <li>• Disaster Management Team Coordinator</li> <li>• Federal Agent</li> <li>• Federal Park Police Officer</li> </ul> | <ul style="list-style-type: none"> <li>• Firefighter</li> <li>• Forensics Investigator</li> <li>• Guard/Officer</li> <li>• Hotel Security Officer</li> <li>• Judge</li> <li>• Law Clerk</li> <li>• Lawyer</li> <li>• Legal Secretary</li> </ul> | <ul style="list-style-type: none"> <li>• Paralegal</li> <li>• Paramedic</li> <li>• Park Ranger</li> <li>• Police Officer</li> <li>• Private Investigator</li> <li>• Probation Officer</li> <li>• Warden</li> </ul> |
| <b>SOCIAL SCIENCES</b>               | <ul style="list-style-type: none"> <li>• Anthropologist</li> <li>• Economist</li> <li>• Environmental Specialist</li> <li>• Lobbyist</li> </ul>   | <ul style="list-style-type: none"> <li>• Political Scientist</li> <li>• Politician</li> <li>• Research Aide</li> <li>• Research Assistant</li> </ul>  | <ul style="list-style-type: none"> <li>• Statistics Clerk</li> <li>• Survey Worker</li> <li>• Urban Planner</li> </ul>   |
| <b>SERVICE AND HOSPITALITY</b>       | <ul style="list-style-type: none"> <li>• Bell Attendant</li> <li>• Executive Chef</li> <li>• Food and Beverage Manager</li> <li>• Front Desk Agent</li> </ul>   | <ul style="list-style-type: none"> <li>• Guest Services/Concierge</li> <li>• Housekeeper</li> <li>• Pastry Chef</li> <li>• Prep Cook</li> </ul>   | <ul style="list-style-type: none"> <li>• Reservations/Sales Agent</li> <li>• Short-Order Cook</li> <li>• Sous Chef</li> </ul>  |

*Start your career pathway in these programs of study*



# PUBLIC AND HUMAN SERVICES CAREER PATHWAY

## CAREER AND TECHNICAL EDUCATION PUBLIC AND HUMAN SERVICES PATHWAY

### PROGRAMS OF STUDY

| OCCUPATIONAL CLUSTER NAME      | PROGRAM OF STUDY          | PROGRAM OF STUDY CORE COURSE | PROGRAM OF STUDY CLUSTER COURSE                               | PROGRAM OF STUDY CONCENTRATION COURSE | PROGRAM OF STUDY REQUIRED ACADEMIC COURSE |
|--------------------------------|---------------------------|------------------------------|---|---------------------------------------|---|
| <b>EDUCATION</b>               | EXPLORATIONS IN EDUCATION | Public and Human Services    | Explorations in Education                                     |                                       | Psychology or Equivalent                  |
|                                | EARLY CHILDHOOD EDUCATION | Public and Human Services    | Explorations in Education                                     | Early Childhood Education             |   |
|                                | ELEMENTARY EDUCATION      | Public and Human Services    | Explorations in Education                                     | Elementary Education                  |   |
|                                | SECONDARY EDUCATION       | Public and Human Services    | Explorations in Education                                     | Secondary Education                   |   |
| <b>SERVICE AND HOSPITALITY</b> | CULINARY I                | Public and Human Services    | Culinary I  |                                       | Biology or Equivalent                     |
|                                | CULINARY II               | Public and Human Services    | Culinary I  | Culinary II                           |   |
|                                | HOSPITALITY SERVICES      | Public and Human Services    | Hotel Operations  |                                       | Psychology or Equivalent                  |
| <b>ENTREPRENEURSHIP</b>        | ENTREPRENEURSHIP          | Public and Human Services    | Any Public and Human Services Program of Study Cluster Course | Entrepreneurship                      | Cluster Required Academic Course          |



Which Career Pathway is right for you?

THE RIASEC TEST

Follow these easy steps to see where your interests are.

1 Read each statement. If you agree with the statement, fill in the circle. There are no wrong answers!

|  |                       |                       |                       |                       |                       |                       |                       |
|--|-----------------------|-----------------------|-----------------------|-----------------------|-----------------------|-----------------------|-----------------------|
| 1. I like to work on cars .....                          | <input type="radio"/> |                       |                       |                       |                       |                       |                       |
| 2. I like to do puzzles .....                            |                       | <input type="radio"/> |                       |                       |                       |                       |                       |
| 3. I am good at working independently                    |                       |                       | <input type="radio"/> |                       |                       |                       |                       |
| 4. I like to work in teams .....                         |                       |                       |                       | <input type="radio"/> |                       |                       |                       |
| 5. I am an ambitious person, I set goals for myself      |                       |                       |                       |                       | <input type="radio"/> |                       |                       |
| 6. I like to organize things, (files, desks/offices)     |                       |                       |                       |                       |                       | <input type="radio"/> |                       |
| 7. I like to build things .....                          | <input type="radio"/> |                       |                       |                       |                       |                       |                       |
| 8. I like to read about art and music .....              |                       |                       | <input type="radio"/> |                       |                       |                       |                       |
| 9. I like to have clear instructions to follow           |                       |                       |                       |                       |                       |                       | <input type="radio"/> |
| 10. I like to try to influence or persuade people        |                       |                       |                       |                       |                       |                       | <input type="radio"/> |
| 11. I like to do experiments .....                       |                       | <input type="radio"/> |                       |                       |                       |                       |                       |
| 12. I like to teach or train people .....                |                       |                       |                       | <input type="radio"/> |                       |                       |                       |
| 13. I like trying to help people solve their problems    |                       |                       |                       |                       | <input type="radio"/> |                       |                       |
| 14. I like to take care of animals .....                 | <input type="radio"/> |                       |                       |                       |                       |                       |                       |
| 15. I wouldn't mind working 8 hours per day in an office |                       |                       |                       |                       |                       |                       | <input type="radio"/> |
| 16. I like selling things .....                          |                       |                       |                       |                       |                       |                       | <input type="radio"/> |
| 17. I enjoy creative writing .....                       |                       |                       | <input type="radio"/> |                       |                       |                       |                       |
| 18. I enjoy science .....                                |                       | <input type="radio"/> |                       |                       |                       |                       |                       |
| 19. I am quick to take on new responsibilities           |                       |                       |                       |                       |                       |                       | <input type="radio"/> |
| 20. I am interested in healing people .....              |                       |                       |                       | <input type="radio"/> |                       |                       |                       |
| 21. I enjoy trying to figure out how things work         |                       | <input type="radio"/> |                       |                       |                       |                       |                       |

|   |                       |                       |  |                       |                       |                       |                       |
|---|-----------------------|-----------------------|--|-----------------------|-----------------------|-----------------------|-----------------------|
| 22. I like putting things together or assembling things | <input type="radio"/> |                       |  |                       |                       |                       |                       |
| 23. I am a creative person .....                        |                       |                       |  | <input type="radio"/> |                       |                       |                       |
| 24. I pay attention to details .....                    |                       |                       |  |                       |                       |                       | <input type="radio"/> |
| 25. I like to do filing or typing .....                 |                       |                       |  |                       |                       |                       | <input type="radio"/> |
| 26. I like to analyze things (problems/situations)      |                       | <input type="radio"/> |  |                       |                       |                       |                       |
| 27. I like to play instruments or sing .....            |                       |                       |  | <input type="radio"/> |                       |                       |                       |
| 28. I enjoy learning about other cultures               |                       |                       |  |                       |                       | <input type="radio"/> |                       |
| 29. I would like to start my own business               |                       |                       |  |                       |                       |                       | <input type="radio"/> |
| 30. I like to cook .....                                | <input type="radio"/> |                       |  |                       |                       |                       |                       |
| 31. I like acting in plays .....                        |                       |                       |  |                       |                       | <input type="radio"/> |                       |
| 32. I am a practical person .....                       | <input type="radio"/> |                       |  |                       |                       |                       |                       |
| 33. I like working with numbers or charts               |                       |                       |  |                       | <input type="radio"/> |                       |                       |
| 34. I like to get into discussions about issues         |                       |                       |  |                       |                       | <input type="radio"/> |                       |
| 35. I am good at keeping records of my work             |                       |                       |  |                       |                       |                       | <input type="radio"/> |
| 36. I like to lead .....                                |                       |                       |  |                       |                       |                       | <input type="radio"/> |
| 37. I like working outdoors .....                       | <input type="radio"/> |                       |  |                       |                       |                       |                       |
| 38. I would like to work in an office .....             |                       |                       |  |                       |                       |                       | <input type="radio"/> |
| 39. I'm good at math .....                              |                       | <input type="radio"/> |  |                       |                       |                       |                       |
| 40. I like helping people .....                         |                       |                       |  |                       |                       |                       | <input type="radio"/> |
| 41. I like to draw .....                                |                       |                       |  |                       | <input type="radio"/> |                       |                       |
| 42. I like to give speeches .....                       |                       |                       |  |                       |                       |                       | <input type="radio"/> |

Total ————— Total

Grand Total

|   |   |   |   |   |   |  |  |
|---|---|---|---|---|---|--|--|
|   |   |   |   |   |   |  |  |
| R | I | A | S | E | C |  |  |

2 Add up the number of filled in circles in each column and then add the two columns together for a grand total.

3 Using your grand total scores from above, transfer the scores for each letter into the appropriate column below.

|   |   |   |   |   |   |  |  |
|---|---|---|---|---|---|--|--|
|   |   |   |   |   |   |  |  |
| R | I | A | S | E | C |  |  |

- R** = Realistic Total: \_\_\_\_\_
- I** = Investigative Total: \_\_\_\_\_
- A** = Artistic Total: \_\_\_\_\_
- S** = Social Total: \_\_\_\_\_
- E** = Enterprising Total: \_\_\_\_\_
- C** = Conventional Total: \_\_\_\_\_

4 Take the three letters with the highest scores and record them under "My Interest Code".

|  |
|--|
| <h2 style="margin: 0;">My INTEREST CODE</h2> |
| _____  |

5 Turn the page to see what this means!

## Which Career Pathway is right for you?

# RESULTS OF THE RIASEC TEST

### R = Realistic

These people are often good at mechanical or athletic jobs. Good college majors for Realistic people are...

- Agriculture
- Health Assistant
- Computers
- Construction
- Mechanic/Machinist
- Engineering
- Food and Hospitality

#### Related Pathways

Natural Resources  
Health Services  
Industrial and Engineering Technology  
Arts and Communication

### I = Investigative

These people like to watch, learn, analyze and solve problems. Good college majors for Investigative people are...

- Marine Biology
- Engineering
- Chemistry
- Zoology
- Medicine/Surgery
- Consumer Economics
- Psychology

#### Related Pathways

Health Services  
Business  
Public and Human Services  
Industrial and Engineering Technology

### A = Artistic

These people like to work in unstructured situations where they can use their creativity. Good majors for Artistic people are...

- Communications
- Cosmetology
- Fine and Performing Arts
- Photography
- Radio and TV
- Interior Design
- Architecture

#### Related Pathways

Public and Human Services  
Arts and Communication

### S = Social

These people like to work with other people, rather than things. Good college majors for Social people are...

- Counseling
- Nursing
- Physical Therapy
- Travel
- Advertising
- Public Relations
- Education

#### Related Pathways

Health Services  
Public and Human Services

### E = Enterprising

These people like to work with others and enjoy persuading and performing. Good college majors for Enterprising people are:

- Fashion Merchandising
- Real Estate
- Marketing/Sales
- Law
- Political Science
- International Trade
- Banking/Finance

#### Related Pathways

Business  
Public and Human Services  
Arts and Communication

### C = Conventional

These people are very detail oriented, organized and like to work with data. Good college majors for Conventional people are...

- Accounting
- Court Reporting
- Insurance
- Administration
- Medical Records
- Banking
- Data Processing

#### Related Pathways

Health Services  
Business  
Industrial and Engineering Technology



OFFICE OF THE STATE DIRECTOR *for*  
CAREER AND TECHNICAL EDUCATION  
[www.hawaii.edu/cte](http://www.hawaii.edu/cte)

*The University of Hawai'i is an Equal Opportunity Affirmative Action Institution*

